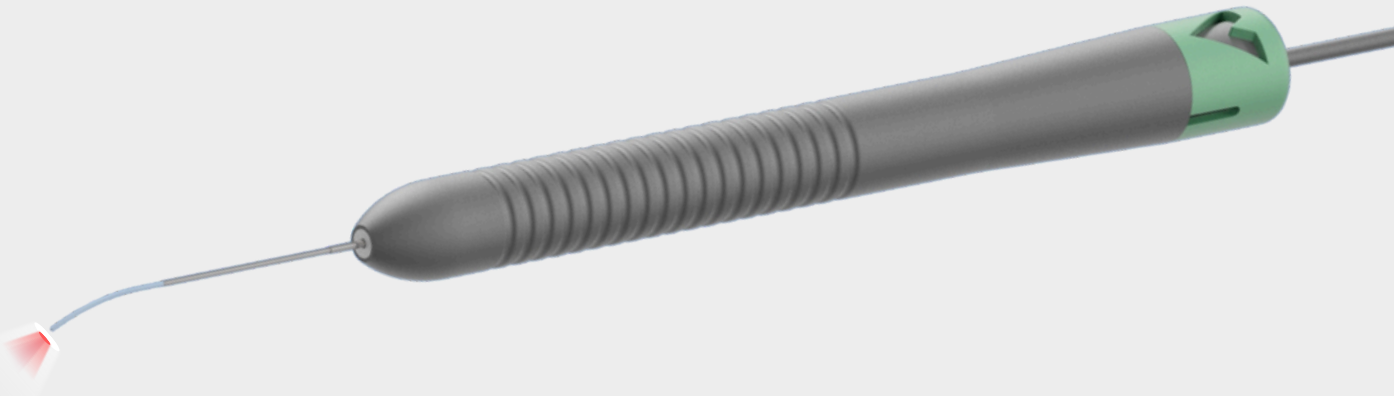




ILLUMINATED FLEX-TIP LASER PROBES



- 33-degree, custom nitinol, curved front needle allows for easy transition through cannulas and access to the periphery
- Uniform and consistent pattern
- Bright, crisp midfield illumination pattern
- Maximized laser throughput
- Premium, malleable fiber cladding eliminates coiling on surgical field and minimizes pull on the surgeon's hand
- Available in 23ga, 25ga and 27ga



**Direct connect to the Alcon Constellation and
the Bausch & Lomb Stellaris PC**





Catalog Numbers and Descriptions

ILLUMINATED FLEX-TIP

VS0135.23A 23ga Illuminated Flex-Tip Laser Probe - Alcon Constellation, Sterile, 5/bx
VS0135.25A 25ga Illuminated Flex-Tip Laser Probe - Alcon Constellation, Sterile, 5/bx
VS0135.27A 27ga Illuminated Flex-Tip Laser Probe - Alcon Constellation, Sterile, 5/bx

VS0135.23B 23ga Illuminated Flex-Tip Laser Probe - Bausch & Lomb Stellaris, Sterile, 5/bx
VS0135.25B 25ga Illuminated Flex-Tip Laser Probe - Bausch & Lomb Stellaris, Sterile, 5/bx
VS0135.27B 27ga Illuminated Flex-Tip Laser Probe - Bausch & Lomb Stellaris, Sterile, 5/bx

VS0135.23 23ga Illuminated Flex-Tip Laser Probe, Sterile, 5/bx * Adapter Needed
VS0135.25 25ga Illuminated Flex-Tip Laser Probe, Sterile, 5/bx * Adapter Needed
VS0135.27 27ga Illuminated Flex-Tip Laser Probe, Sterile, 5/bx * Adapter Needed

ILLUMINATED LASER PROBE ADAPTERS

VS0ALC Illumination Adapter - Alcon Constellation
VS0BLS Illumination Adapter - Bausch and Lomb Stellaris
VS0DOR Illumination Adapter - DORC EVA and DORC NEXUS

ORDERING INFORMATION:



LASER PROBES

Vortex Surgical
4 Research Park Drive, Suite 124
Saint Charles, MO 63304 USA

Phone: 636-778-4350
Email: info@vortextsurgical.com
Web: www.vortextsurgical.com



VORTEX SURGICAL

Trademarks are the property of their respective owners